



Sutton Road, Langley, Maidstone, Kent, ME17 3NQ
Price £580,000

CHARMING MID 19TH CENTURY RAGSTONE COTTAGE IN IMMACULATE ORDER

This delightful mid-19th century semi-detached ragstone cottage is set in a secluded position being accessed via a private road, approximately a quarter of a mile from Sutton Road, providing a peaceful yet convenient location.

The cottage has been sympathetically refurbished and includes upgraded windows, doors, boiler, radiators and roof. Inside, the ground floor comprises an entrance hall, a ground-floor bedroom, and an additional room which could serve as a home office or second bedroom. The lounge/diner boasts a charming log burner, creating a warm and inviting atmosphere, while the oak-fitted kitchen is enhanced by granite worktops and extends into a spacious family room with a vaulted ceiling with exposed beams.

The luxury bathroom completes the ground floor. Upstairs, the main bedroom is a standout feature, with a dressing room, and there is an additional bedroom and bathroom on this floor. Externally, there is a driveway providing off-road parking to the front and side of the property. The large, secluded gardens are a real highlight, offering a peaceful outdoor space extending approximately 100ft, perfect for enjoying the outdoors in a private setting.

Additional benefit include part oak flooring, tasteful decor throughout and wired CCTV to the front of the home.

Langley is a popular village with a range of local amenities, including shops, schools, a doctor's surgery, veterinary surgery, several inns, and the parish church. Bearsted and Headcorn train stations are around 4 miles away, and Maidstone, the county town of Kent, is also approximately 4 miles, offering a full range of services and amenities.

Viewing is highly recommended. Call Page and Wells Loose Office today and book your viewing to avoid missing out.



GROUND FLOOR

Entrance Hall

Lounge 20'8" x 12'4" (6.32m x 3.76m)

Kitchen 14'4" x 11'5" (4.38m x 3.50m)

Family Room 11'5" x 11'2" (3.50m x 3.41)

Study 11'2" x 7'0" (3.41m x 2.14m)

Bedroom 2 11'3" x 9'0" (3.45m x 2.75m)

Shower Room

FIRST FLOOR

Bedroom 1 12'9" x 11'4" (3.90m x 3.47m)

Bedroom 3 9'11" x 9'7" (3.04m x 2.94m)

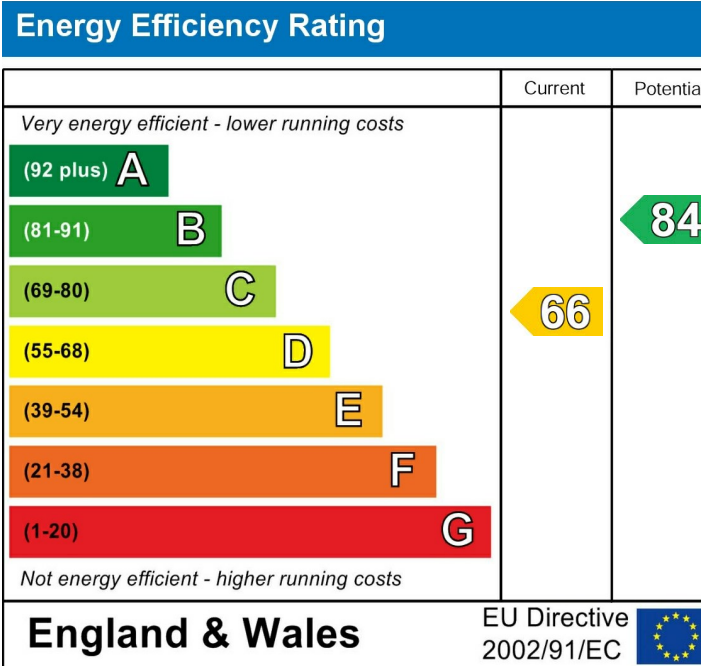
Bedroom 4 9'5" x 7'6" (2.89m x 2.31m)

Family Bathroom

EXTERNALLY

Shed 10'6" x 7'9" (3.22m x 2.38m)

Shed 9'7" x 9'5" (2.93m x 2.89m)



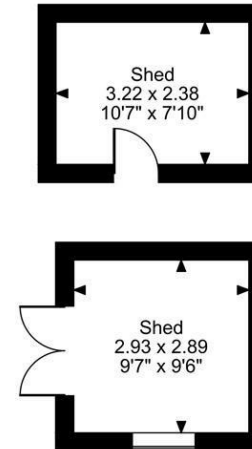
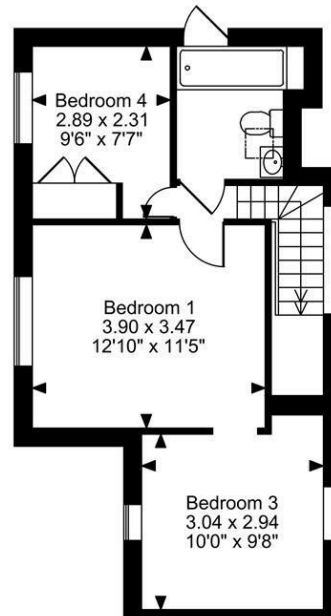
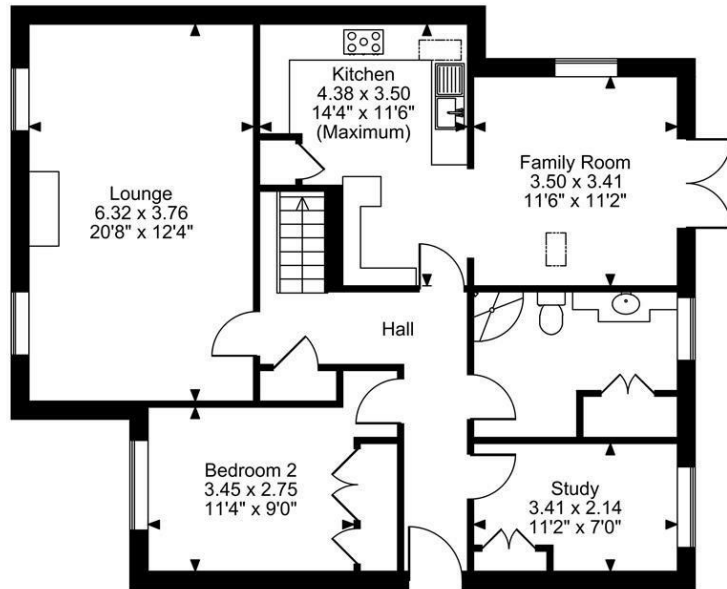
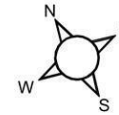
Stone Cottages, Sutton Road, Langley, Maidstone

Approximate Gross Internal Area

Main House = 1363 Sq Ft/127 Sq M

Outbuilding = 173 Sq Ft/16 Sq M

Total = 1536 Sq Ft/143 Sq M



FOR ILLUSTRATIVE PURPOSES ONLY - NOT TO SCALE

The position & size of doors, windows, appliances and other features are approximate only.

© ehouse. Unauthorised reproduction prohibited. Drawing ref. dig/8643580/TOW